



Legend

- Areas that appeared darker on the post-war image, (e.g. pollution, oil spills, missing oil tanks or buildings).
- Areas that appear brighter on the post-war image (e.g. bomb impacts).
- 1** Change in water quality in the canal collecting waste water from refinery, fertiliser and petrochemical plants.
- 2** Visible bomb impacts and destruction of buildings from the Agricultural Aircraft Factory LOLA UTVA.
- 3** Visible impacts on "unknown" buildings.
- 4** "Destroyed" Oil tanks.
- 5** Changes that may have resulted from oil spills.
- 6** "Destroyed" buildings in both fertiliser and petrochemical plants.

0 0.5 1 Km

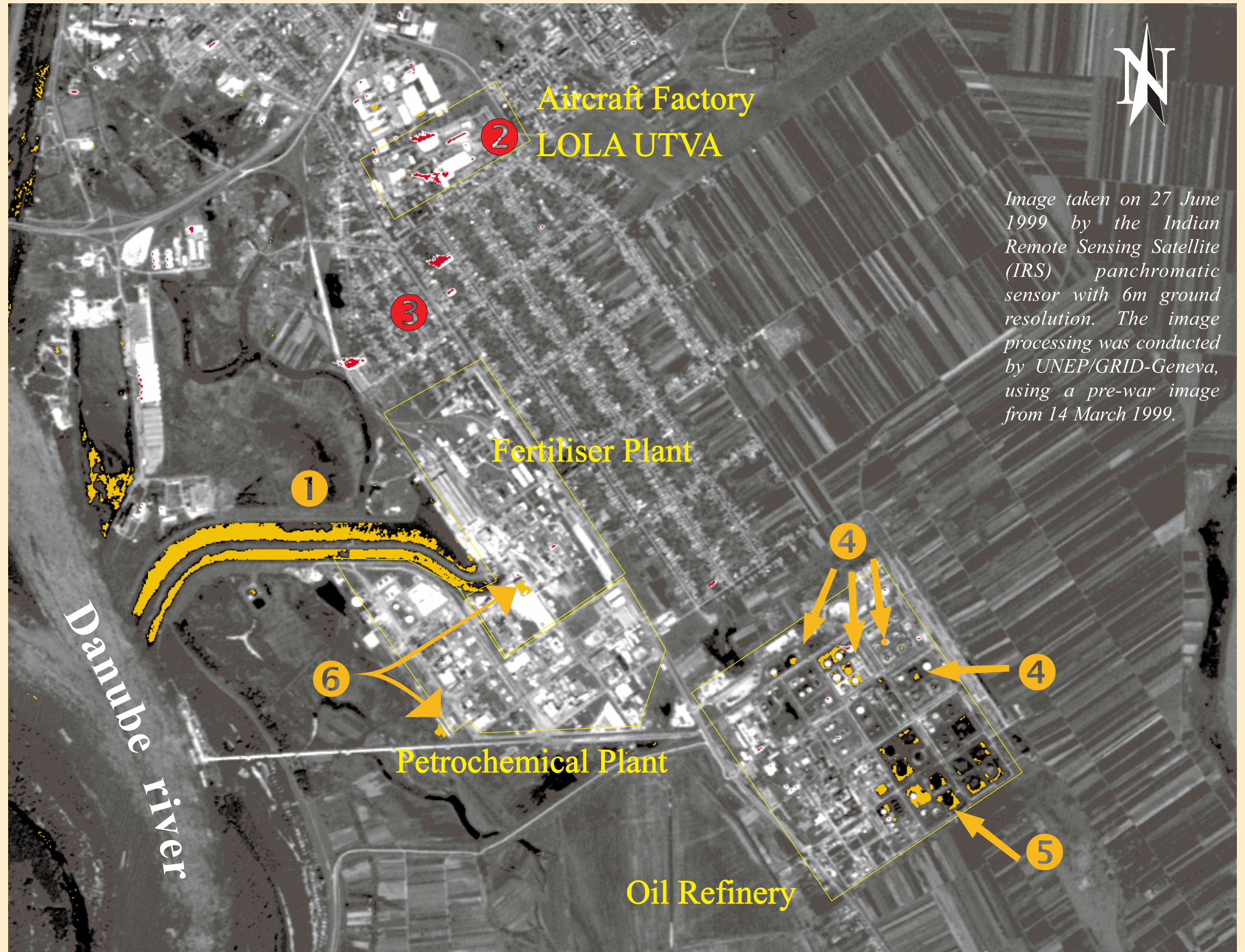



Image taken on 27 June 1999 by the Indian Remote Sensing Satellite (IRS) panchromatic sensor with 6m ground resolution. The image processing was conducted by UNEP/GRID-Geneva, using a pre-war image from 14 March 1999.